

2020 Annual Report

---

**COLLABORATE.**

**CONVENE.**

**EDUCATE.**

---

## 2020 BOARD OF DIRECTORS

**Sarah Beth Estes, PhD**  
*President*

**Jill Floyd**  
*First Vice President*

**Wendy Johnson**  
*Second Vice President*

**Liz Story**  
*Treasurer*

**Corey Alderdice**  
*At-Large Representative*

**Gena Wingfield**  
*At-Large Representative*

**Katherine Berry**

**Jennifer Browne**

**Lee Lee Doyle, PhD**

**Mildred Franco**

**Yolanda Hughes**

**Chris Jones, PhD**

**Kim Lane**

**Kim O'Guinn**

**Melanie Taylor**

**Cindy Thornton**

**Cici Conger Portie**

**First Lady Susan Hutchinson**  
*Honorary Member*

## TEAM

**Anna Beth Gorman**  
*Executive Director*

**Ryder Buttry**  
*Director of Programs  
& Strategic Initiatives*

**Sophie Wise**  
*Operations  
& Communications  
Manager*

**Eliana Scully**  
*AmeriCorps VISTA  
Strategic Initiatives  
Program Coordinator*

**Caitlin Camper**  
*AmeriCorps VISTA  
Statewide Impact  
Coordinator*

**Marie Kressin**  
*AmeriCorps VISTA  
Marketing & Brand  
Awareness Coordinator*

## CONTRACTORS

**Courtney Childers**  
*Grantwriting &  
Development*

**Jensyn Hallett**  
*Grantwriting*

**Trisha Guenther**  
*Accounting*

**Lacy Selig**  
*Development*

**Angela Shirey**  
*Development*

## MISSION

To ensure economic security for Arkansas women and girls through collaboration and focused philanthropic investment.

## VISION

WFA envisions an Arkansas in which women achieve economic equity and security.

## VALUES

Empowerment | Equity | Responsiveness | Influence  
| Education | Commitment | Compassion | Boldness |  
Innovation | Perseverance | Inclusion | Ambition

# A NOTE FROM LEADERSHIP



**ANNA BETH GORMAN**  
*Executive Director*



**SARAH BETH ESTES**  
*Board President*

*Dear WFA Community,*

It won't surprise you to hear that this was a year that pushed our boundaries and forced us to reimagine how we were going to continue doing the work we know to be so important. It was immediately clear that the pandemic would disproportionately affect women and as such we knew we had to take action.

In March, the WFA committed to supporting women owned business through the pandemic. We raised \$80,000 to disperse to women-owned businesses across the state. The need was so great. We received almost 1000 applications to our Women-Owned COVID-19 Grant Relief Fund. In each, women told stories of how their businesses were struggling at the beginning of the pandemic. We raised \$80,000, which was dispersed to women business owners across the state. We committed 75% of these funds to businesses owned by women of color in light of the disproportionate impact of COVID-19 in this community.

Almost immediately following we witnessed the death of George Floyd, an event that touched off an historic movement for social justice. We know that our work in gender equity cannot be done until racial equity is achieved, in June of 2020 the WFA released a statement supporting protests of systemic racial inequality. We know that we as need to do more to support marginalized communities. We are committed to DEI training as part of our official Strategic Plan and to making DEI principles central to our operations.

Due to the ongoing pandemic, our annual Girls of Promise Conference was switched to a completely virtual format. The WFA team mailed Girls of Promise At Home boxes to all 200 eighth-grade girls who were accepted, and hosted virtual yoga and cooking sessions.

Finally, in our most challenging year we continued to experience an exciting time of growth and unprecedented investment in the Foundation's work. We received a grant from the Women's Funding Network that allowed us to create a Women's Economic Mobility Hub. Recognizing that the entrepreneurial ecosystem has historically and systematically disadvantaged women and people of color, our model will collaboratively and uniquely support women-owned businesses through the creation of a fund from which women business owners can access critical capital.

Our community – volunteers, donors, corporate sponsors, grantees, collaborators, board members, and staff – played a part in every success you will see in the following pages. Thank you for trusting us to collaborate, convene, and advocate for the improved circumstances of women & girls in our state. We are proud to share our successes but we know there is more work to be done. Thanks to your continued support, the Foundation will sustain our work on behalf of Arkansas' women and girls into 2021 and beyond. Join us as we work to make Arkansas a more equitable place for women & girls to live and lead.

**Anna Beth & Sarah Beth**

# 2020 GRANTEES

Through our grantmaking this year, we were able to **collaborate** with non-profits and funder collaboratives throughout Arkansas that were working to improve the economic circumstances of women & girls in our state. In our twenty-one year history, we have distributed more than **\$400,000** to organizations statewide. In 2020, the grant award total, in this year alone, is over **\$100,000**. This brings our foundational lifetime investment to more than **\$500,000**. This year we granted to **thirty-six** organizations, small businesses, and schools under our two initiatives, Girls of Promise and Women Empowered. A total of **\$40,500** was granted out to organizations under our Girls of Promise Initiative and **\$88,700** was granted out under Women Empowered.

## WOMEN EMPOWERED GRANTEES

**Arkansas Impact Philanthropy**

**Arkansas Asset Funders Network**

**UCA Minority Vendor Partnership Initiative**

*Research on Entrepreneurship among Women of Color in the Delta Region of Arkansas*

**University of Arkansas Little Rock**

## WOMEN-OWNED: COVID-19 GRANT RELIEF FUND

**Mother Goose Daycare**

**Renaissance Healthcare**

**Elder House Adult  
Daycare Center**

**1 More Life**

**Brooklyn's "Bridge to  
Learning" Daycare**

**Essence Stylz & Kutz**

**B's Wedding Rentals**

**Bella Cleaning Services**

**Kharis Grants & Services**

**Eunoia Therapy & Self  
Development**

**Career Development &  
Training Institute, LLC**

**Kiki Dance Studio &  
Wellness Center, LLC**

**Praise Printing &  
Photography**

**Mell's Beauty Studio**

**Wonderlust Hair Studio  
LLC**

**YGFBF Kitchen Mobile  
Food & Catering LLC**

## GIRLS OF PROMISE GRANTEES

**Arkansas Cinema Society**

*Filmmaking Lab for Teen Girls*

**EAST Initiative**

*Dr. Mary Lowe Good  
Legacy Scholarship*

**Museum of Discovery**

**Arkansas Regional Innovation Hub**

**Augusta School District**

**Barton School District**

**Barton-Lexa School District**

**Dumas School District**

**Forrest City School District**

**Lakeside School District**

**Lee County School District**

**McCrory School District**

**Augusta School District**

**McGehee School District**

**Brinkley School District**



## GRANTEE SPOTLIGHT

### Bailey Doss *Dr. Mary Lowe Good Scholarship*

This year we expanded our grant-making to the EAST initiative to support the creation of the Dr. Mary Lowe Good Legacy Scholarship. This scholarship was designed for a high school senior girl, involved in the EAST program, with a desire to go into a STEAM career.

Dr. Mary Lowe Good, a WFA founder, spent her life dedicated to advocating for women in the STEM field. Good was a distinguished chemist, professor, industrial innovator, and government leader who broke many glass ceilings for women in science.

This EAST Initiative scholarship was awarded to a young woman who would continue to carry on the Good legacy..

“RECEIVING THE GOOD SCHOLARSHIP WAS AN HONOR AND ONE OF THE MOST IMPACTFUL THINGS IN MY LIFE THUS FAR. AS A STUDENT WANTING TO GO INTO NURSING, THERE IS NOBODY ELSE I WOULD WANT TO ASPIRE TO BE LIKE. WITH THAT SAID, WITHOUT THE GOOD SCHOLARSHIP, I WOULD NOT BE AS CONFIDENT OR PREPARED FOR THE STUDENT LIFE I’VE ENCOUNTERED AT UCA THIS FALL.”

*Bailey Doss,  
Scholarship Recipient*

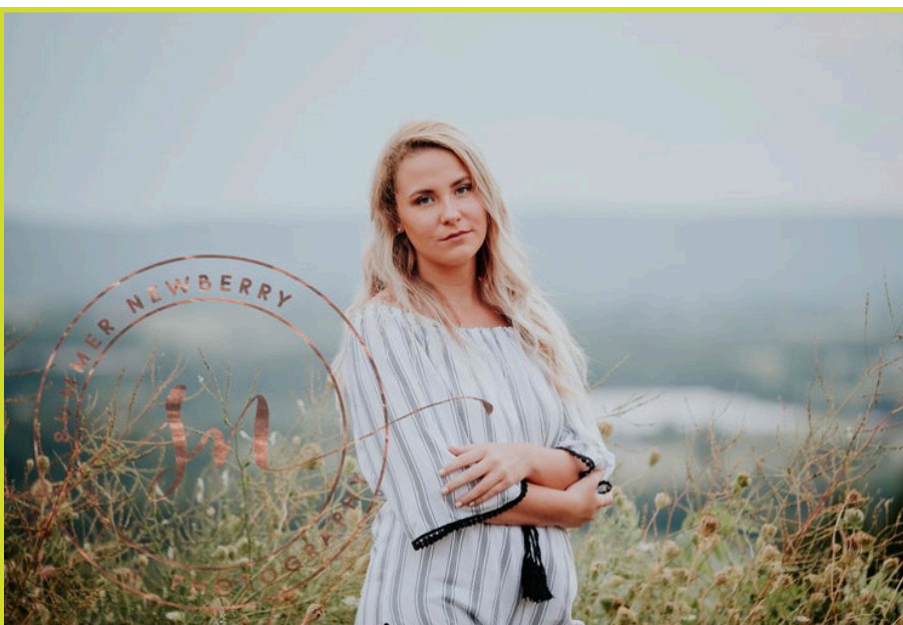


**SHOOT DAY**  
*Filmmaking Lab participants pose for a group photo*



#### **GIRL POWER**

*Filmmaking Lab participants focused on empowering the image of the young girl in this year's short film project.*



**BAILEY DOSS**  
*Scholarship Recipient*

# WOMEN EMPOWERED

## Women Empowered Initiative 2020 Steering Committee

Patricia Ashanti

Cindy Conger

Margaret Ellibee

Sara Beth Estes

Mildred Franco

Erika Gee

Dorothy Hall

Devin Hancock

Abby Hughes Holsclaw

Kimberly Lee

Laura Nick

Carole Smith

Cindy Thorton

Cindy Varner

## Women-Owned Grant Committee

Katherine Berry

Ryder Buttry

Jensyn Hyman

Kimberly Lee

Martie North

Chauncey Pettis

Angela Shirley

Adena White

Kara Wilkins

## WOMEN-OWNED: COVID-19 GRANT RELIEF FUND

In 2020, the majority of our Women Empowered Initiative was dedicated to battling the affects of the COVID-19 pandemic. This year, women-owned businesses were among the highest fiscal losses due to this pandemic. The WFA saw need, and made the decision to roll out \$80,000 in grants to 16 women-owned businesses within the state of Arkansas. The WFA team & volunteers reviewed over 1,000 applications from businesses across the state, expressing their furvent need for funding during the pandemic.

## GRANTEE SPOTLIGHT



**MaryAnn Strange,**  
**YGFBFKitchen**

This year, we released \$80,000 in COVID-19 relief funds to women-owned businesses across the state of Arkansas. Under our Women-Owned COVID-19 Grant Relief Fund, we were able to support 16 women-owned businesses. One of those being, MaryAnn Strange, owner of YGFBF Kitchen restaurant and catering. MaryAnn used grant funds to cover her business's rent and bills since her business had closed for COVID-19 precautions.

“THE WOMEN-OWNED GRANT HELPED US GET FROM THE RED TO THE CLEAR AND GAVE US SOME ROOM TO NOT BE SO STRESSED IN AN ALREADY STRESSFUL SITUATION AND YEAR..”

*MaryAnn Strange,,  
Women-Owned Grantee Recipient*



**RESEARCH**  
Stories of women of color  
business owners and  
entrepreneurs in Arkansas.



“IT’S TIME FOR US TO START  
SHARING OUR STORIES AND  
THEN NOT BE AFRAID TO  
THRIVE IN THAT SPACE.”

**ARKANSAS WOMEN ENTREPRENEURS  
DO NOT HAVE ACCESS TO THE CAPITAL  
THEY NEED**



**Access to capital is what women want and what women need.** Capital is necessary to create and grow a business. Data shows that many women cannot secure startup capital for their new business, and even when they do, women receive lower levels of funding than their male peers.<sup>2</sup>

In AR, 1 in 4 small businesses  
are women-owned.<sup>3</sup>

AR has about 80,000 women-owned  
businesses contributing nearly \$10 billion in  
revenue to the state's economy.<sup>4</sup>

Nationally, women receive only 2% of all venture capital funding.<sup>5</sup>

Nearly 75% of AR entrepreneurs of color depend on personal cash to  
finance their businesses compared to 55% of White entrepreneurs.<sup>6</sup>

Of the \$1 billion in SBA financing to AR small businesses from 2015  
to 2019, only 1.2% (\$12M) supported Black-owned businesses and  
1.8% (\$18M) supported Latinx-owned businesses.<sup>7</sup>

In the last 3 years, AR business owners of color applied for  
lending at a disproportionately lower rate than White business  
owners but were denied lending at a higher rate.<sup>8</sup>

71% of AR business loan applicants were  
denied a loan for insufficient operating capital.  
Female business owners of color the were  
most impacted.<sup>9</sup>

**RESEARCH**  
Arkansas women entrepreneurs face  
systemic barriers to accessing capital that  
prevent them from developing and growing  
wealth-building businesses..

## WOMEN'S ECONOMIC MOBILITY HUB

This year, WFA was chosen to join a cohort of nine women's foundations across the country to partake in the Women's Funding Network's

Regional Women's Economic Mobility Hub project, as part of an 18-month effort funded by the Bill & Melinda Gates Foundation to increase support and resources necessary to advance economic mobility among women and girls. We dedicated our Economic Mobility Hub to continue the work done through our Women Owned COVID-19 Grant Relief Fund.

Recognizing that the entrepreneurial ecosystem has historically and systematically disadvantaged women and people of color, the model will educate the ecosystem on how to collaboratively and uniquely support women-owned businesses, serve as a bridge and create a fund from which women business owners can access critical capital.

Our first step to creating our Women's Economic Mobility Hub was to support research on women of color entrepreneurs within the state of Arkansas. Through collaboration with the University of Central Arkansas, we were able to support the creation of **Women of Color Business Owners and Entrepreneurs in Arkansas.**

Through collaboration with Arkansas Asset Funders Network we were able to join a cohort to support the creation of **CAPITAL. What Women Really Want.** This report identifies Arkansas women entrepreneurs and the barriers they face to access capital.

# A VIRTUAL GIRLS OF PROMISE

## GIRLS OF PROMISE INITIATIVE 2020 Steering Committee

Janet Cinfio

Megan Craig

Carl Frank

Una Garimella

Suzanne Mitchell

Daniel Moix

Steve Rice

## GIRLS OF PROMISE CONFERENCE 2020 Planning Committee

Katie Story

Faith Anaya

Jamie Collins

Amanda Day

Avery McLean

Sandra Leiterman

Shelsea Veloz

Rachel Zimmerman

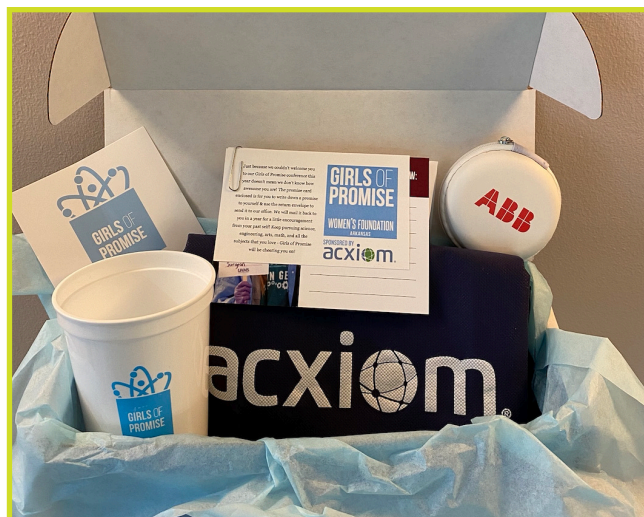
This year, we had to pivot our Girls of Promise Conference to a completely virtual platform. After cancelling our original date, we made the decision to still bring the Girls of Promise Conference experience to the 200 hundred eighth-grade girls that were accepted into the original conference. We convened our conference committee and brainstormed how to continue to serve the communities of girls. In April, the WFA committed to a virtual program. We mailed out boxes to all 200 girls containing conference swag & promise cards, we held virtual yoga sessions & cooking classes, ensuring that the Girls of Promise Conference would not hold as a cancelled event. None of this could have been possible without our donors and dedicated committee members. This year taught us how to continue to bring the Girls of Promise Conference to all platforms; we are excited to continue a virtual Girls of Promise in 2021.

“HAVING BEEN INVOLVED IN THOSE EARLY YEARS, WHEN I LOOK AT OUR PROGRAM NOW, I REALIZE HOW MANY YOUNG WOMEN HAVE HAD THEIR HORIZONS BROADEN BY BEING ABLE TO PARTICIPATE IN THIS WONDERFUL PROGRAM.”

Dr. Lee Lee Doyle

Girls of Promise Founder and WFA Board Member

GOP AT HOME  
Virtual yoga with Sarah Pilcher



GOP AT HOME  
Boxes mailed to 200 eighth-grade girls to allow participation in the Girls of Promise Conference



**POWER OF THE PURSE  
HONOREES**



**WOMAN OF THE YEAR IN BUSINESS**  
*Marnie Oldner, CEO Stone Bank*



**WOMAN OF THE YEAR IN PHILANTHROPY**  
*Sissy Jones, Owner & Founder, Sissy's Log Cabin*



**AR FIRST LADY'S WOMAN IN PUBLIC SERVICE**  
*Amy Fecher, Cabinet Secretary for the State of Arkansas, Department of Transformation and Shared Services.*



**BROWNIE LEDBETTER CIVIC ENGAGEMENT AWARD**  
*Dr. Karama Neal President of Southern Bancorp Community Partners*

# POWER OF THE PURSE LUNCHEON



## Power of the Purse Co-Chairs

**Mandy Richardson & Mitch Bettis**

Our Power of the Purse Luncheon was a hybrid event; a limited amount of guests were invited to join us in-person in the gardens of the Arkansas Governor's Mansion while we livestreamed the event for our virtual attendees. Although completely different from our original format, we were able to host a successful fundraiser. Thanks to sponsors like Sissy's Log Cabin, we were able to host a drawing of Lagos jewelry! This, partnered with our amazing co-chairs & honorees, helped us surpass our fundraising goal

**THE WFA IS SO THANKFUL FOR EACH OF THESE VENDORS THAT HELPED BRING OUR VISION OF A HYBRID POWER OF THE PURSE TO LIFE. IT WOULD NOT HAVE BEEN A SUCCESSFUL EVENT WITHOUT THEM.**

**BYLITES**

**VINES BROOKSHIRE**

**ARKANSAS GOVERNOR'S MANSION**

**DYV EVENTS**

# STRATEGIC PLANNING

In 2020, the WFA committed to the creation of our Strategic Plan, which has mapped out the WFA's work for the next five years. With guidance from Inveritas Consulting & CEO Ruth Whitney, the WFA team and board was able to build out a plan that would allow us to focus on empowering Arkansas women & girls into the foreseeable future.

## OUR MISSION

To ensure economic security for Arkansas women and girls through collaboration and focused philanthropic investment.

## OUR VISION

WFA envisions an Arkansas in which women achieve economic equity and security.

## OUR VALUES

Empowerment | Equity | Responsiveness  
| Influence | Education | Commitment  
| Compassion | Boldness | Innovation |  
Perseverance | Inclusion | Ambition



### STRATEGIC PRIORITY #1

Create, fund, and promote systems and programs that provide education, mobility and economic security for Arkansas women and girls



### STRATEGIC PRIORITY #2

Grow WFA's relevancy and impact statewide with a focus on underserved communities



### STRATEGIC PRIORITY #3

Ensure organizational vitality that results in active and sustained investment in Arkansas women and girls



### STRATEGIC PRIORITY #4

Utilize data-informed research to collaborate with communities to build engagement on behalf of Arkansas women and girls

# STRATEGIC DELIVERABLES

# VENDORS

In 2020, the Women's Foundation of Arkansas committed to continuing to support local women-owned businesses through our vendors. Below are women-owned businesses we were able to support through our vendors, contractors, and others that were able to help us make our 2020 events safe and enjoyable.

## ART

**Yang Luo Branch**

## CATERING

**Cocoa Belle Chocolates**

**Rx Catering**

## CONSULTANTS & CONTRACTORS

**Courtney Childers**

*Grantwriting & Development*

**Jensyn Hallett**

*Grantwriting*

**Trisha Guenther**

*Guenther Accounting Solutions*

**Lacy Selig**

*Selig Strategies*

**Angela Shirey**

*Development*

**Michelle Stewart**

*DYV Events*

## COMMUNICATIONS

**Mangan Holcomb Partners**

## FLORIST

**Hodge Podge**

## PHOTOGRAPHY

**Callie Neal**

*FTP Collective*

**Katie Childs**

*Katie Childs Photography*

## PRINTING

**Magna IV**

# DONORS

## **\$25,000 - \$75,000+**

Cynthia Conger  
Winthrop Rockefeller Foundation  
Women's Funding Network

## **\$15,000 - \$24,999**

Arkansas Business Publishing Group

## **\$10,000 - \$14,999**

Arvest Bank  
AT&T Arkansas  
Corporation for National and Community Service  
Economics Arkansas  
Mangan Holcomb  
Stone Bank  
Vines Brookshire  
Wells Fargo  
Windstream Communications

## **\$5,000 - \$9,999**

61 Celsius  
Arkansas Community Foundation  
Bank of America  
Linda Hargis  
McLarty Automotive Group  
Nucor-Yamato Steel  
Rebsamen Fund  
John Selig  
Simmons Bank  
Sissy's Log Cabin

## **\$2,500 - \$4,999**

3M  
Arkansas Blue Cross and Blue Shield  
Minority and Women Business Division,  
AEDC  
Citizens Bank  
Crafton Tull  
Dassault Falcon Jet  
Sandra Franecke  
Garver, LLC  
Inveritas Research and Consulting  
Southern Bancorp  
Southwest Power Pool  
Stone Ward - Little Rock  
Liz Story  
Cynthia Thornton  
United Health Group

## **\$1,000 - \$2,4999**

ABB Motors and Mechanical Inc  
Arkansas Children's Hospital  
Arkansas Electric Cooperative  
Corporation  
BEI Precision Systems and Space  
Katherine Berry  
Jennifer Browne  
Tjuana Byrd  
CDI Contractors  
Ann Childs  
Robin Connell  
Lee Lee Doyle  
EGP LLP  
Entergy Charitable Foundation  
Mildred Franco  
Office of the Governor Governor Asa  
Hutchinson  
Nancy and William Henderson  
Mary Helen Henry  
Annabelle Imber Tuck  
Impact Management Group  
Wendy Johnson  
Emily Money  
Munro Foundation  
Museum of Discovery  
Kimberly O`Guinn  
Marnie Oldner  
Periscope Holdings  
Quattlebaum, Grooms & Tull  
Regina Radke  
Barbara Sugg  
Melanie Taylor  
Alison Williams  
Gena Wingfield  
Carolyn Witherspoon

## **\$500 - \$999**

Gregory and Helen Burton  
Chambers Bank  
Ellon Cockrill  
Community Partners  
Sarah Beth Estes  
Julia Garcia  
Colin Gorman  
Debby Thetford Nye  
John Owens  
Plantation Services  
Potluck & Poison Ivy  
Steve Rice  
Mary Beth Trubitt  
UALR College of Business  
University of Arkansas at Little Rock



## **\$250 - \$499**

Arkansas Federal Credit Union  
Jamie Bandy  
Christina Drale  
Laura Fine  
Trisha Guenther  
Hodge Podge, Etc.  
Heather Honaker  
Jennifer Hoss  
Ellen Kreth  
Theresa Mount  
Network For Good  
Hillis Schild  
Mary Gay Shipley  
Millie Ward  
Sarah Wengel  
Kara Wilkins

## **\$100 - \$249**

Acxiom Corporation  
Viviane Ajarrista  
Catherine Anne Atkinson  
Ann Bain  
Karen Baugh  
Gail Bellingrath  
Peyton Bishop  
Jean Block  
Lekita Brown  
Belinda Brown  
Susan Brown  
Lori Burrows  
Elizabeth Camper  
Centennial Bank  
Cross Gunter Witherspoon & Galchus  
Jerry Damerow  
Melissa Dean -  
Karrah Dickeson  
Matt & Jill Dozier  
DEBORAH DRAYTON  
Cheryl Drury  
Angela Duran  
Marianne Estes  
Olivia Farrell  
Amy Fecher  
Karen Fetzer  
Fidelity Charitable  
Erin Finzer  
Jill Floyd  
Jennifer Fowler  
James Gorman  
Dorothy Hall  
Jensyn Hallett  
Hank's Furniture, Inc.

Natasha Harris -  
Tamhra Hutchins-Frye  
Cindy Ireland  
Stephanie Jackson  
Patricia Jolliff  
Ian King  
Pat Lile  
Debbie MaKris  
Melissa Martin  
Suzanne Matthew  
Kathryn May  
Karen McDaniel  
Mike McGibbony  
Lucy McNew  
Diane Meador  
Diana Millenbaugh  
Madeline Moore  
Olly Neal  
Susan Norton  
Nancy Oudin  
Sammye Owen  
Betty Owen  
Barbie Pierce  
Amanda Potter Cole  
Janelle Powell  
Mary Pringos  
Robin Reed  
Anne Robinson  
Diane Robinson  
Amy L. Rossi  
Merritt Royal  
Mary Beth Saad  
Grace Steuri  
Charles Stewart  
Stephanie Thompson  
Cindy Trotter  
Crystal Vint  
Sherry Walker  
Libbi Whitehurst  
Ruth Whitney  
Mary Wildgen  
Aseelah Williams  
Janalyn Williams Massey  
Bonnie Williamson  
Mary Willmuth  
Laveta Wills-Hale  
Jennifer Wilson-Harvey  
Shanda Winkowski-Thornton  
Barbara Wise  
Rebecca Zimmermann  
Mary Zunivk

## **\$1 - \$99**

Brooke (Couch) Graham  
Corey Alderdice  
Stephanie Alderdice  
Michele Allgood  
Faith Anaya  
Arkansas STEM Coalition  
Jeremy Ausburn  
Bryn Bagwell  
Tiffany Barger  
Kwajdo Boaitey  
Tawanna Broadway  
Cheryl Brown  
LORI BROWN  
Cathy Browne  
Ann Buchanan  
Abigail Buchanan  
Rachel Bunch  
Noelle Buttry  
Lisa Carlon  
Fran Carter  
Maria I. Castro  
Karyn Coleman  
Esperanza Crane  
Marcella Dalla Rosa  
Debbie Davis  
Amanda Day  
Jennifer-Kristen Dillard  
Diedra Dixon  
Jessica Dunham  
Jennifer Ferguson  
Charlene fite  
Debra Fithen  
Debra Fithen  
Nechi Fullerton  
Pam Futch  
Addie Gardner  
Kristin Gawlik  
Julie Gillaspy  
Gena Givens  
Anna Beth Gorman  
Brooke Graham  
Adrian Graham  
Karen Greer  
Christine Gronwald  
Chris Hailey  
Charity Hallman  
Charity Hallman  
Diane Hancock  
Alexandra Henry  
Brooke Hollowoa  
Stephanie Hopkins Martin

Amy Hopper  
Tanya James  
Sarah James  
Melissa Jenkins  
Abby Jennings  
Amy Johnson  
Alex Johnston  
Rebecca Jones  
Jessica Jorge-Graulau  
Stephanie Keet  
Elizabeth King -  
Kellie Knight  
Janet Korenblat  
Mary Koziar  
Mary Lackie  
Cara Lank  
Kathleen Lawson  
Joni Lee  
Johanna Lewis  
Kate Lonberger  
Denise Lorenz  
Madeline Marquette  
Virginia McClellan  
Marie McCrary  
Mary McCraw  
Jo Beth McElhanon  
McKenzie McMath  
Wayne Miller  
Andrea Mitton  
Kerry Moody  
Tonya Musial  
Heather Nelson  
Diana Nolte  
Abby Olivier Jennings  
Lucie Pathmann  
Suzanne Peyton  
Rachel Pitre  
Cora Pittard  
Cindy Pugh  
Tiffany Rogers  
Phyllis Rogers  
Tiffany Rogers  
Jana Rucker  
Ashley Russell  
Jena Selva  
Lottie Shackelford  
Susie Shinn  
Patty Shipp  
Laura Shue  
Kristi Smith  
Errin Stanger  
Susan Stewart  
Carlie Tacker

The Crescent Hotel  
Lorrie Trogden  
John Tucker  
Julianne Unger  
Kristen Vandaveer  
Eryn Veach  
Larry White  
Darrin Williams  
Erin Wood

## FINANCIALS

In 2020, the Women's Foundation of Arkansas was able to grant out the largest amount to date within the life of the organization. This could not have been possible without the support of various donors & grantors that believe in the work we do. The WFA also doubled in size in 2020, bringing on the need to expand our capacity and pivot the entire team to a virtual platform. The WFA experienced a successful fiscal year which allowed us to collaborate, convene, and educate on a larger scale.

### REVENUE

GRANTS & CONTRIBUTIONS - \$721,697

IN-KIND DONATIONS - \$61,108

NET CHANGE IN INVESTMENTS — (\$276)

TOTAL REVENUE - \$782,529

### EXPENSES

PROGRAM EXPENSES - \$452,301

SUPPORTING SERVICES - \$216,910

TOTAL EXPENSES - \$669,211

### NET ASSETS

BEGINNING OF YEAR - \$553,559

END OF YEAR - \$666,877

CHANGE IN NET ASSETS - \$113,318

**WOMEN'S FOUNDATION**  
ARKANSAS